

Type: FMM 350 QSL (50/60Hz, 220/230V)
Part no.: 72295224230



Item	Part no.	Designation	Quantity	Status
10	31901173000	Motor housing	1	
30	32805311000	Slide switch	1	
70	30712087015	Brush holder	2	
80	30711157000	Carbon brush	2	
110	30762453990	Electronics	1	
130	32431045000	Cable clamping piece	1	
155	31415110000	Pressure piece	4	
160	43074010000	Screw Tx15 35x16	7	
170	43074002000	Screw 35X20	2	
180	30707350010	Cable with plug	1	
190	31413233000	Cable grommet	1	
230	31603053010	Bearing bush	1	
250	53278005230	Armature	1	
260	41701001032	Grooved ball bearing	1	
270	41701007038	Grooved ball bearing	1	
285	32172014010	Magnet	1	
290	40612167000	Sealing ring	1	
300	41701000020	Grooved ball bearing	1	
310	42616046003	Circlip	1	
350	52278046230	Stator unit	1	
405	31508287030	Tool head	1	
430	34300000012	Lever	1	
480	33218150000	Eccentric ring	1	
490	40242064000	Straight pin	1	
495	30507220000	Bush	2	

Type: FMM 350 QSL (50/60Hz, 220/230V)
Part no.: 72295224230



Item	Part no.	Designation	Quantity	Status
510	30907067000	Locking spring	1	
520	43064023045	Fillister head screw	1	
530	43074009000	Screw TX20 40X20	4	
5000	33901131920	N.A.	1	
5010	33218136000	Extractor hood	1	
5020	30601106007	Felt ring	2	
5030	30605112000	Adapter	1	
5040	33218137010	Suction unit	1	
5200	32119122000	Handle	1	
5210	30232050000	Wire clamp	2	
5300	33904488000	EPP insert	1	
5450	63806136220	Sanding pad	1	
5500	92602091000	Dust extraction set	1	
6000	32160003014	Lubricant tube 0,085 kg	1	
9000	34101242060	Operating instructions	1	
9020	34130054061	Safety instruction	1	

Prices valid from: 15 Nov 2017

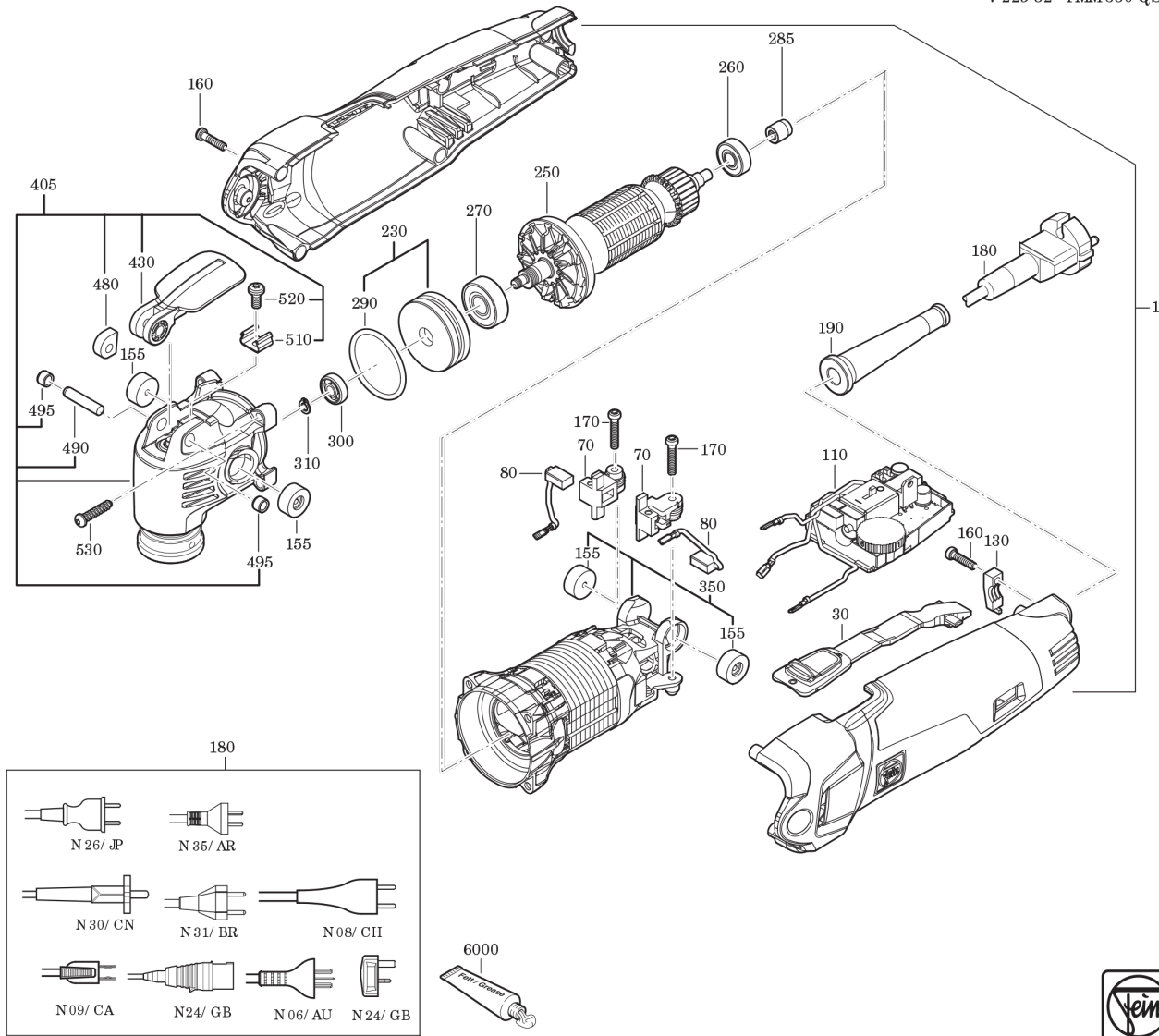
The prices valid on the day of delivery are decisive for the calculation. Subject to transmission errors and changes to technology, form and appearance.

* Only limited quantities or not available anymore. Please contact FEIN.

Type:
Part no.:

FMM 350 QSL (50/60Hz, 220/230V)
72295224230

7 229 52 - FMM350 QSL



Type:
Part no.:

FMM 350 QSL (50/60Hz, 220/230V)
72295224230

7 229 52 - FMM 350 QSL

